

SnapLogic Pipeline, Project Extraction Prerequisites

Contents

- 1. Introduction3
- 2. Extraction Steps3
 - 2.1 Exporting Pipelines3
 - 2.2 Exporting Projects4
- 3. Getting Help.....5

1. Introduction

LeapLogic's Assessment profiles existing inventory, identifies complexity, draws lineage and provides comprehensive recommendations for migration to modern data platform.

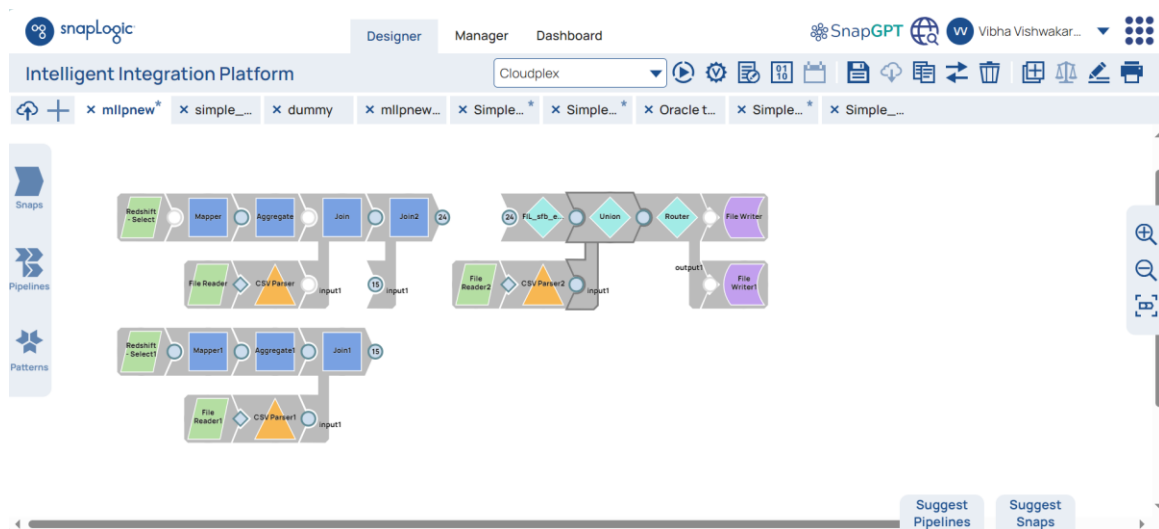
2. Extraction Steps

LeapLogic requires SnapLogic **pipelines in the .slp format** or the **Project Bundle in the .json format** to perform an assessment. Follow the below given steps to achieve the same.

2.1 Exporting Pipelines

Open Dashboard execution history. Exporting pipelines from this interface also exports the Pipeline configuration that was used at the time of execution.

1. Open the Pipeline from Manager/Designer, or from the Pipeline tab in the Dashboard.



2. Go to Toolbar > **Export Pipeline**.

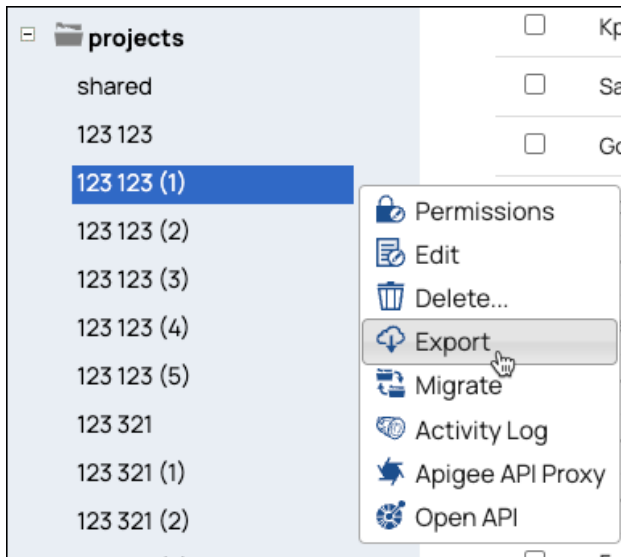


3. Click **Export** to download the file on your local machine as a .slp file.

2.2 Exporting Projects

Export the whole project as an archived file containing all the pipelines, files, flows, accounts, and tasks associated with it. Further, pipeline dependencies such as child pipelines and related accounts are also maintained during the project export.

1. In SnapLogic Manager, hover on the Project that you want to export and then click the arrow. The project menu opens:



2. Click **Export**. The Export <Project Space>/<Project Name> dialog opens.



3. Select the asset types that you want to export. By default, Pipeline, Task, Account, and Flows options are selected. We recommend selecting **All** to export all the assets in one go.
4. Click **Export** to download the Project as an archived file.

3. Getting Help

Contact LeapLogic technical support at info@leaplogic.io