

# ODI Assessment Object Extraction Steps (Smart Export)

Contents

1. Introduction .....3

2. ODI Object Extraction .....3

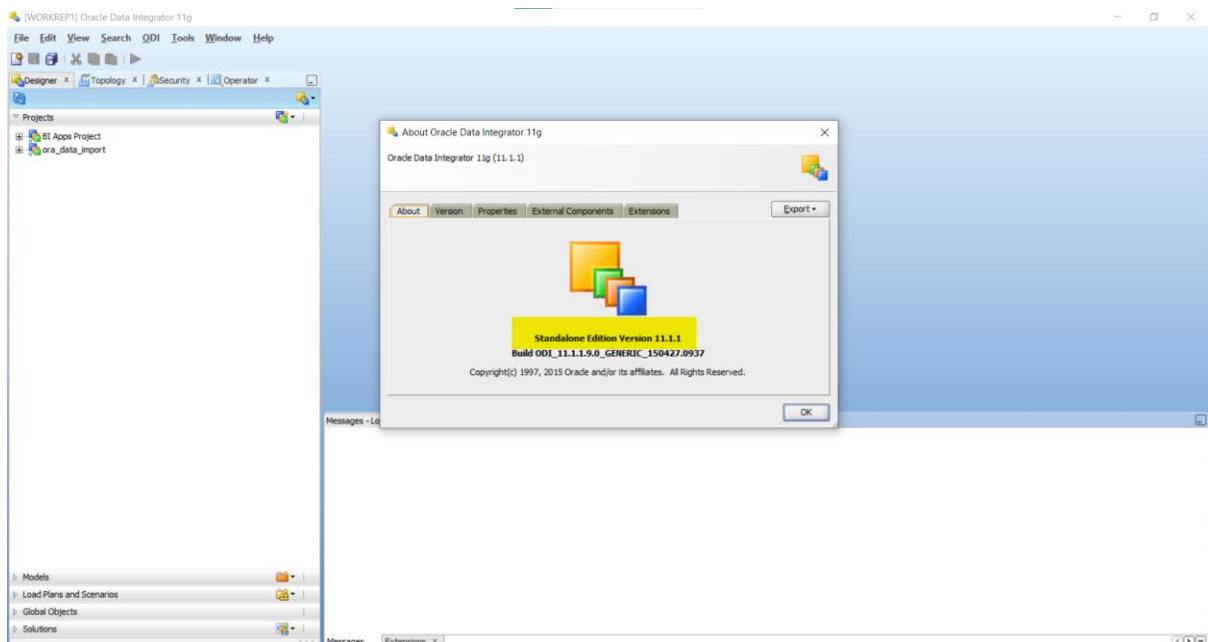
## 1. Introduction

LeapLogic Assessment profiles existing inventory, identify complexity, lineage and provides comprehensive recommendations for migration to modern data platform.

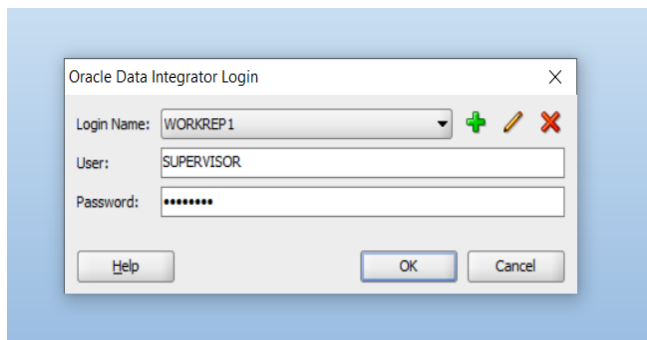
## 2. ODI Object Extraction

Please follow the below steps to export objects in the required format. LeapLogic accepts the jobs in the XML format. The following steps and screenshots are referred from ODI 11g (11.1.1). The screenshots may slightly differ for other versions.

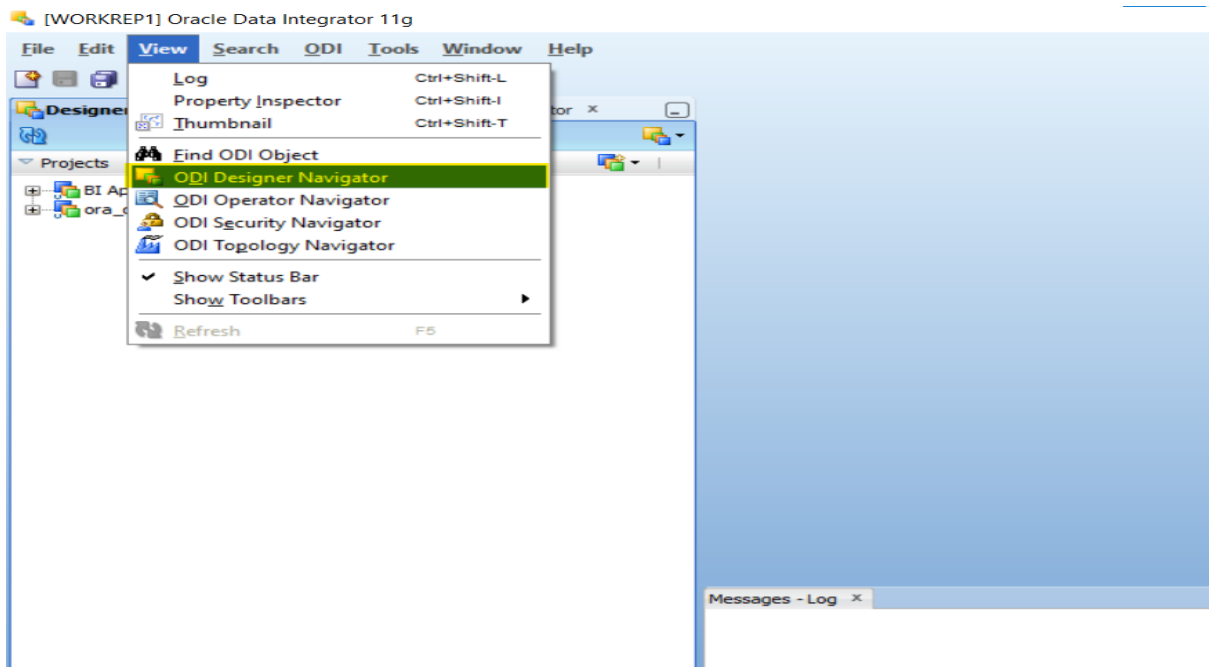
- Go to your Oracle environment.



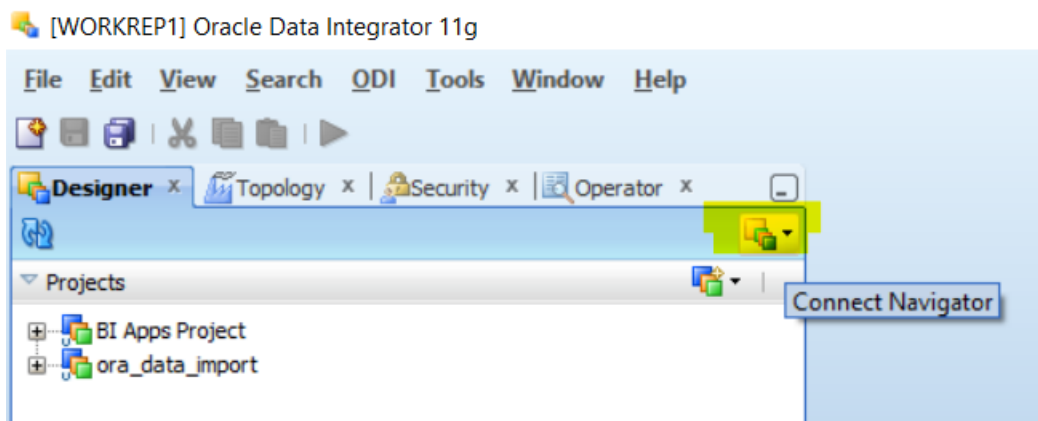
- Connect to your work repository.



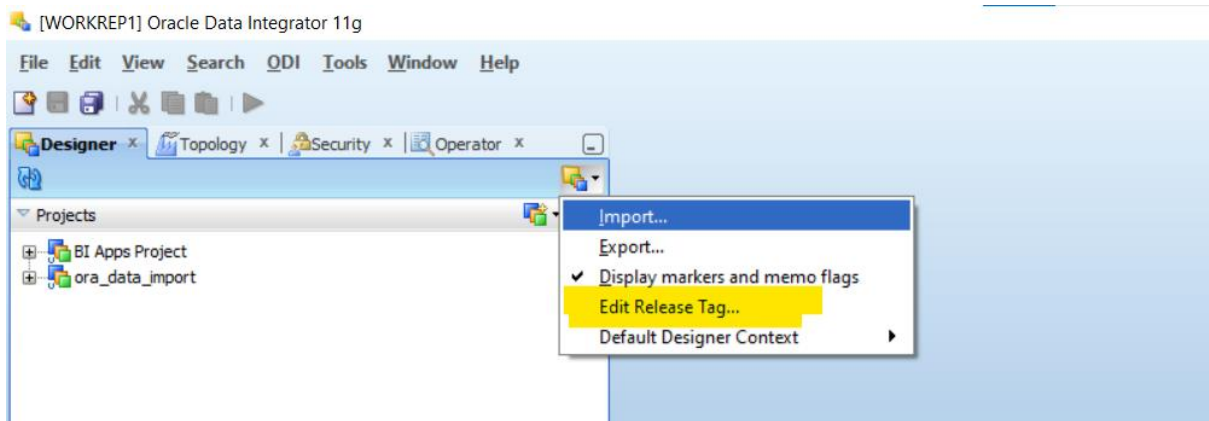
- Go to **View** tab in the toolbar and open **ODI Designer Navigator**



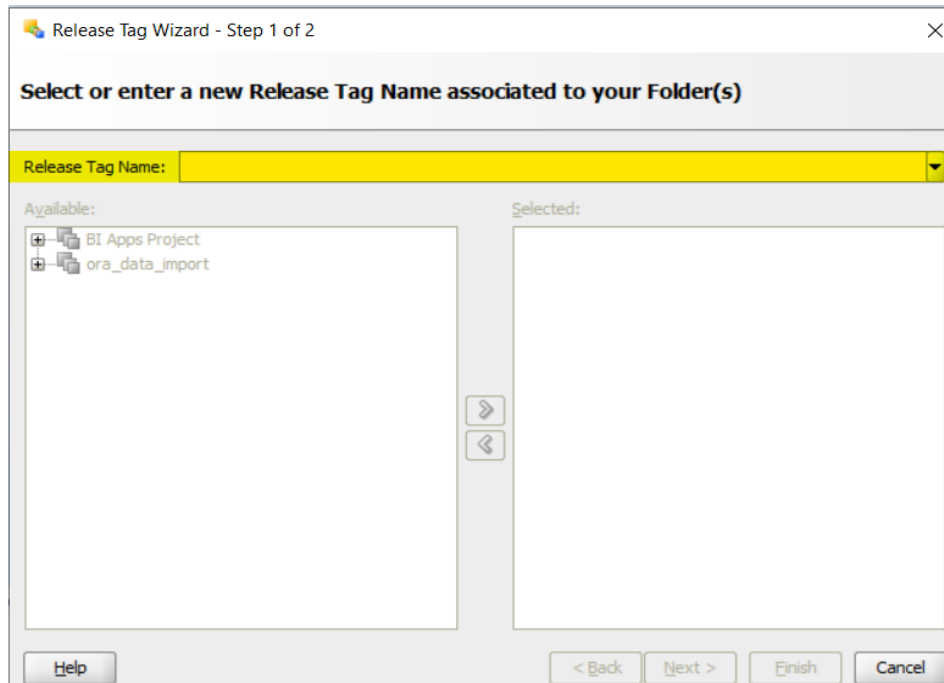
- Go to Connect Navigator



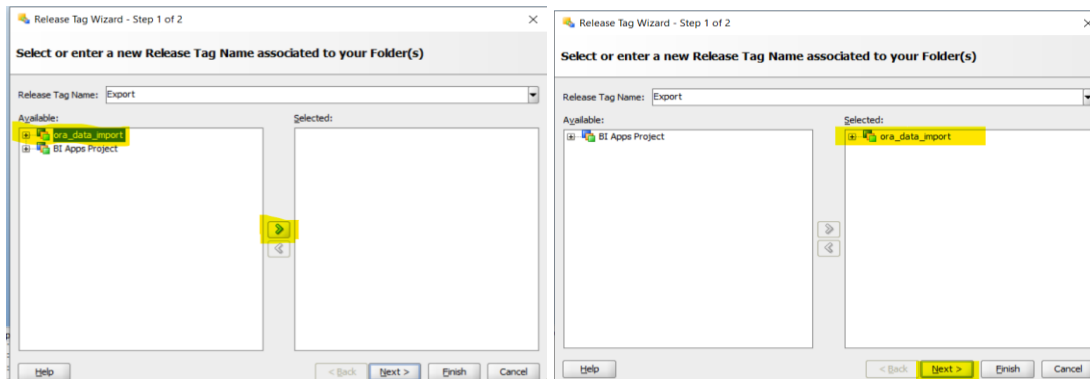
- Click Edit Release Tag...



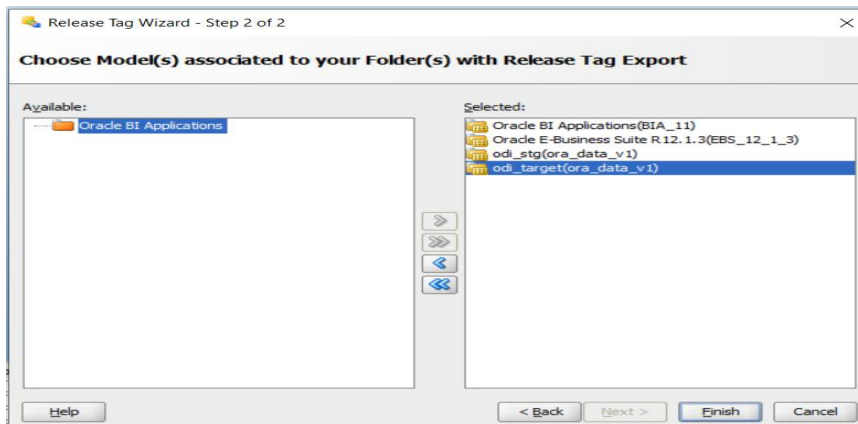
- In **Release Tag Name** field, select the existing tag from the drop down or you can create a new tag by entering any new name.



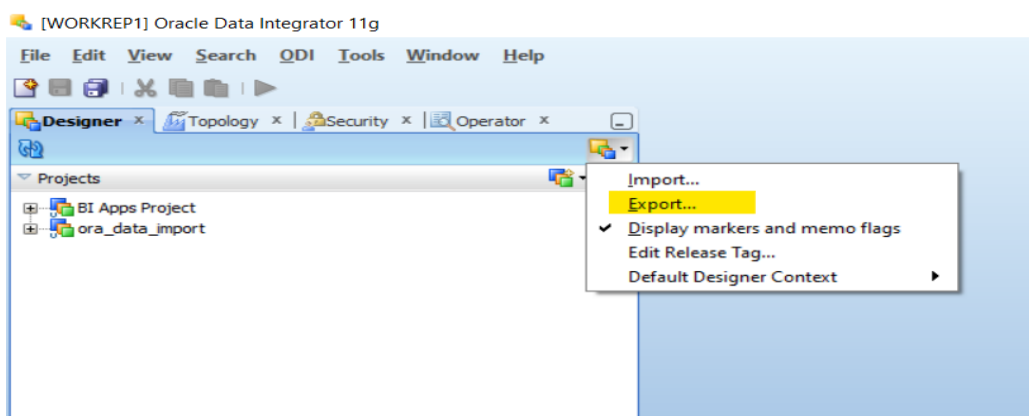
- After that move all the projects you want to export to the selected column, click **Next**



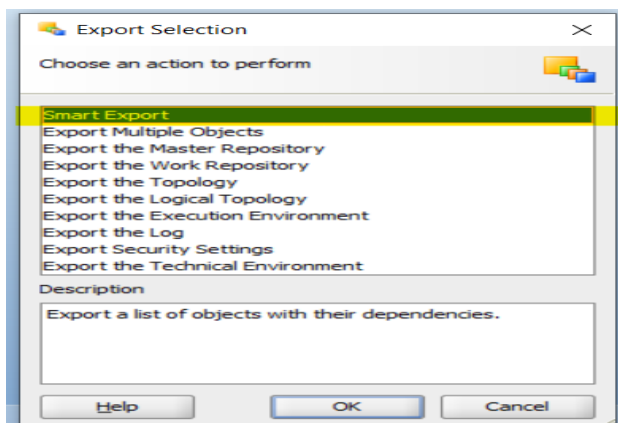
- Next, select all the models you want to export with it and click **Finish**.



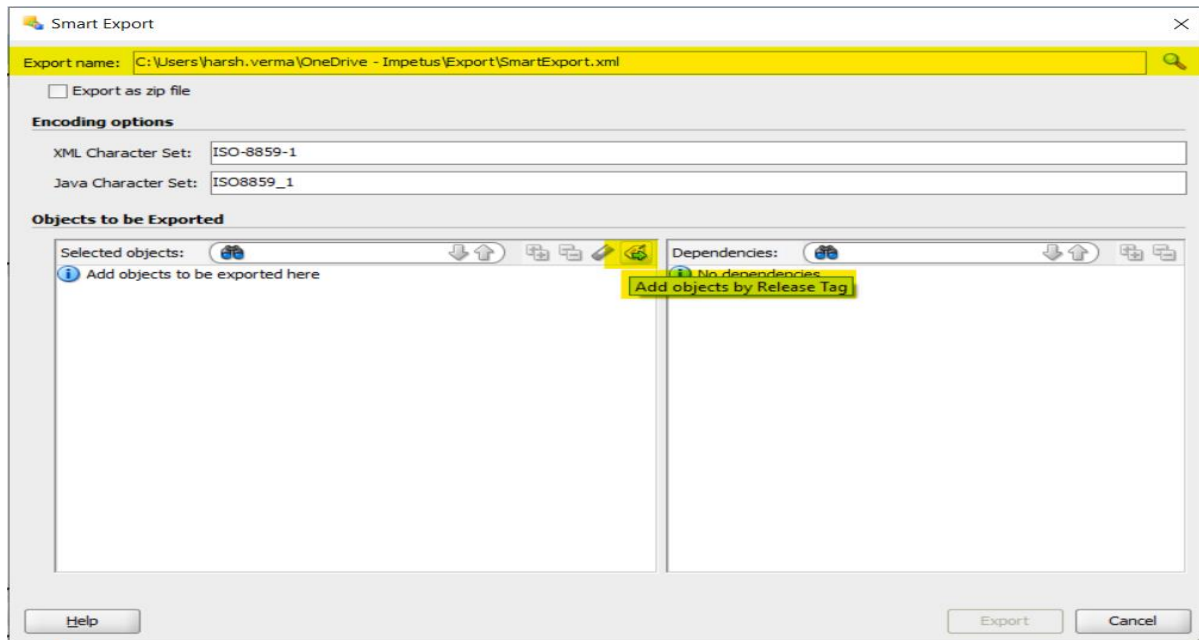
- Again, go to Connect Navigator and click **Export...**, Export Selection dialogue will be opened.



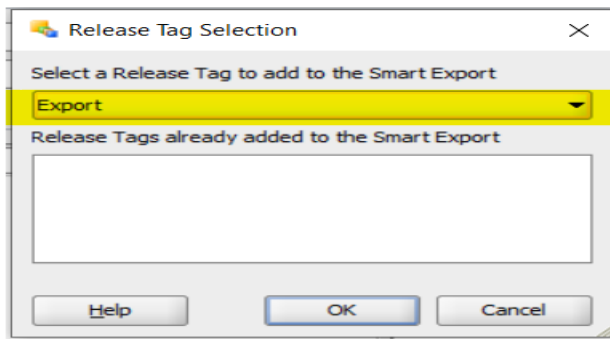
- Select Smart Export and click **OK**.



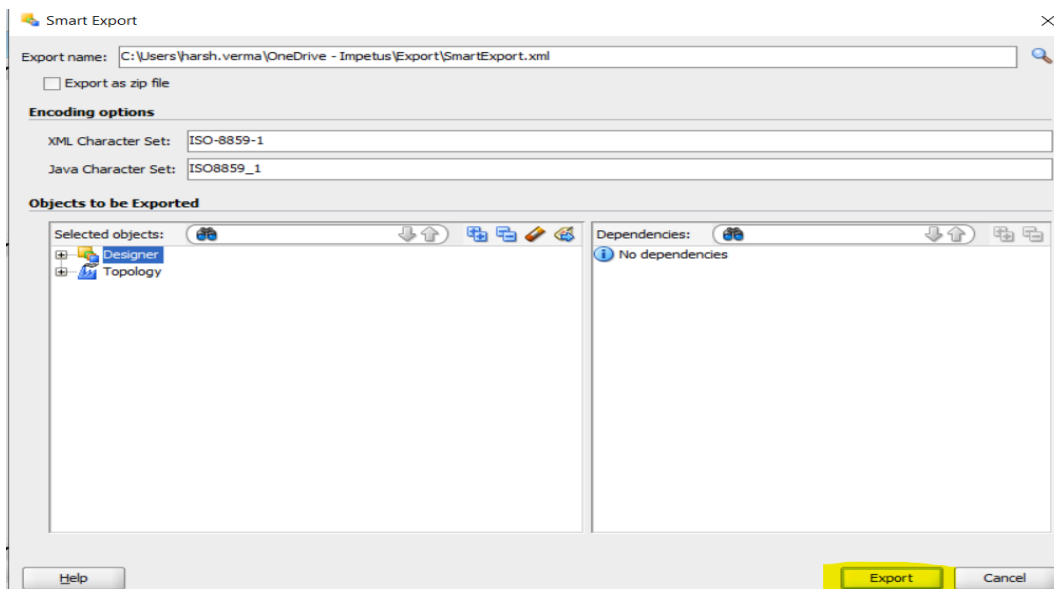
- Provide the **Export name** with the directory where you want to store the file and click **Add objects by Release Tag**.



- Next, select the release tag we just created and click **OK**.



- You will be back on the Smart Export window, click **Export** and the file will be exported.



- You will get a report. Use the Save option to save it or copy-paste the data directly into an Excel file.

Smart Export Report

**Smart Export Report**

**Master Repository**

User added Objects

Object Type	Object Name	Object ID
-------------	-------------	-----------

Dependent Objects

Object Type	Object Name	Object ID	Used By Object Type	Used By	Uses Object Type	
Physical Schema	Oracle\EBS_Server 2 Stage OCI\EBS_Server 2.XXIBE	66560	Context	XXIBE	Context	XXIBE
			Logical Schema	Oracle\DS_EBSR 1213	Logical Schema	Oracle\DS
Context	Global	2999	Logical Schema	Oracle\DW_BIAPPS11G	Logical Schema	Oracle\pdi
			Logical Schema	Oracle\DS_EBSR 1213	Logical Schema	Oracle\pdi
			Logical Schema	In-Memory Engine\SUNOPSIS_MEMORY_ENGINE	Logical Schema	Oracle\DW
			Logical Schema	Oracle\pdi_stg1	Logical Schema	Oracle\DS

Help Save... Close

Save Report

Saving format: Save as XML

Name of the target file:

**Advanced Options**

XML Version: 1.0

XML Character Set: ISO-8859-1

OK Cancel

- Zip all the XML files and share it with the Impetus team.