

Informatica Assessment Workflow Extraction Steps

Contents

- 1. Introduction3
- 2. Informatica Workflow Extraction (Preferred Approach).....3
- 3. Informatica Workflow Extraction – Individually (Alternative)5

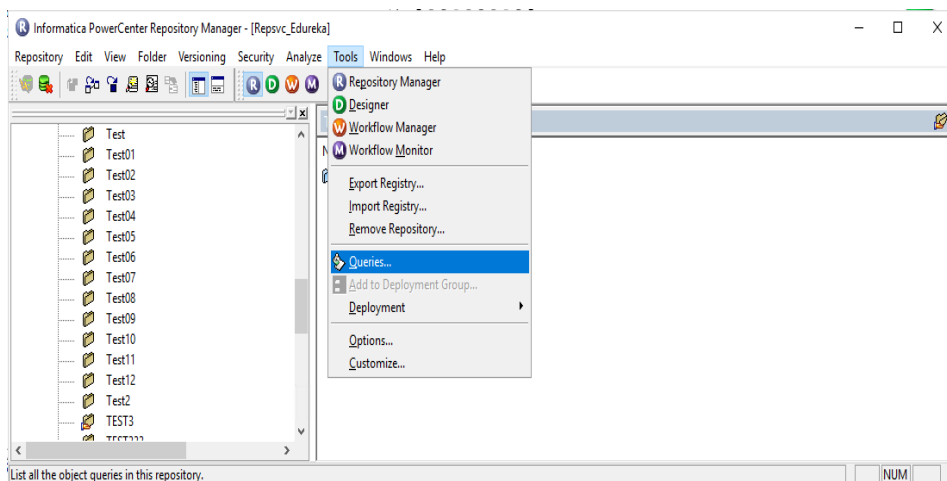
1. Introduction

LeapLogic Assessment profiles existing inventory, identifies complexity, highlights workload interdependencies, and provides comprehensive recommendations for migration to modern data platforms.

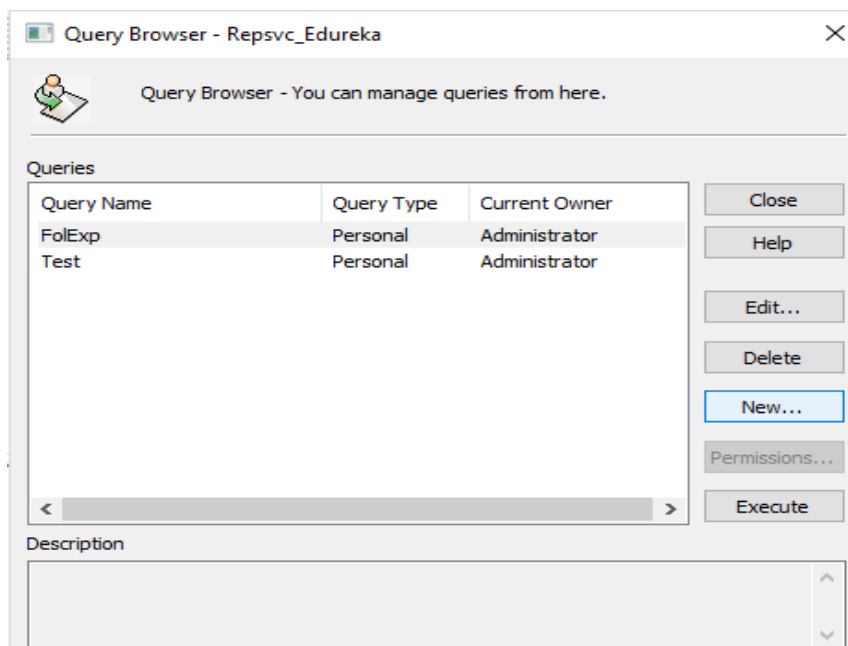
2. Informatica Workflow Extraction (Preferred Approach)

LeapLogic requires Informatica workflows exported in XML format. Below are the steps to export all objects from your Informatica repository.

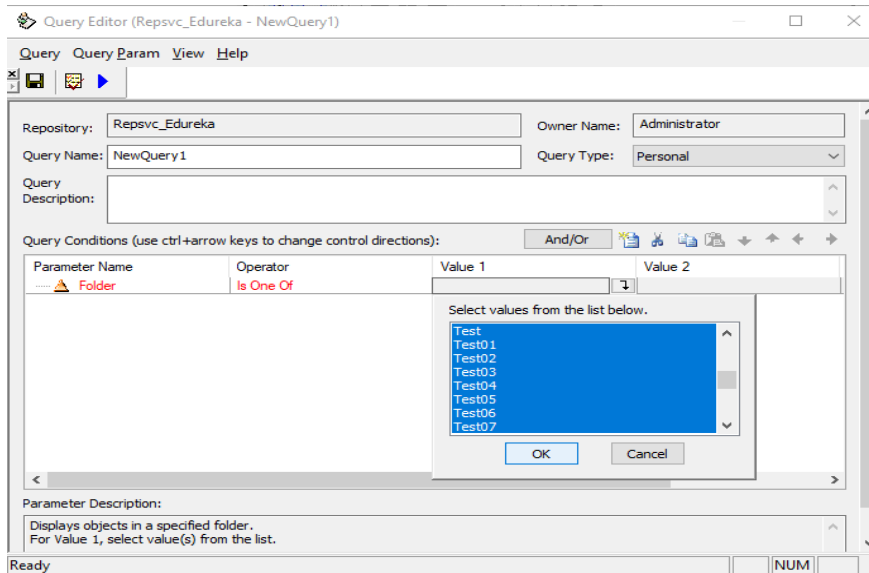
- Open Repository Manager and login to the required repository.
- Use the top menu and click **Queries** from the Tools menu.



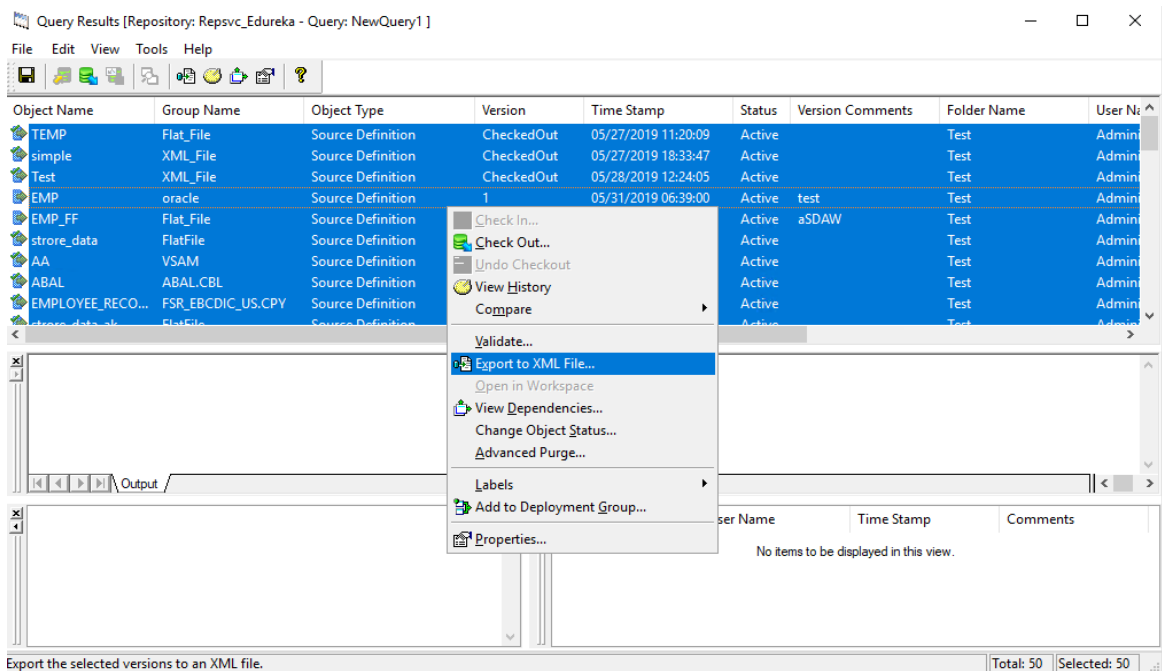
- In the Query browser, click **New**.



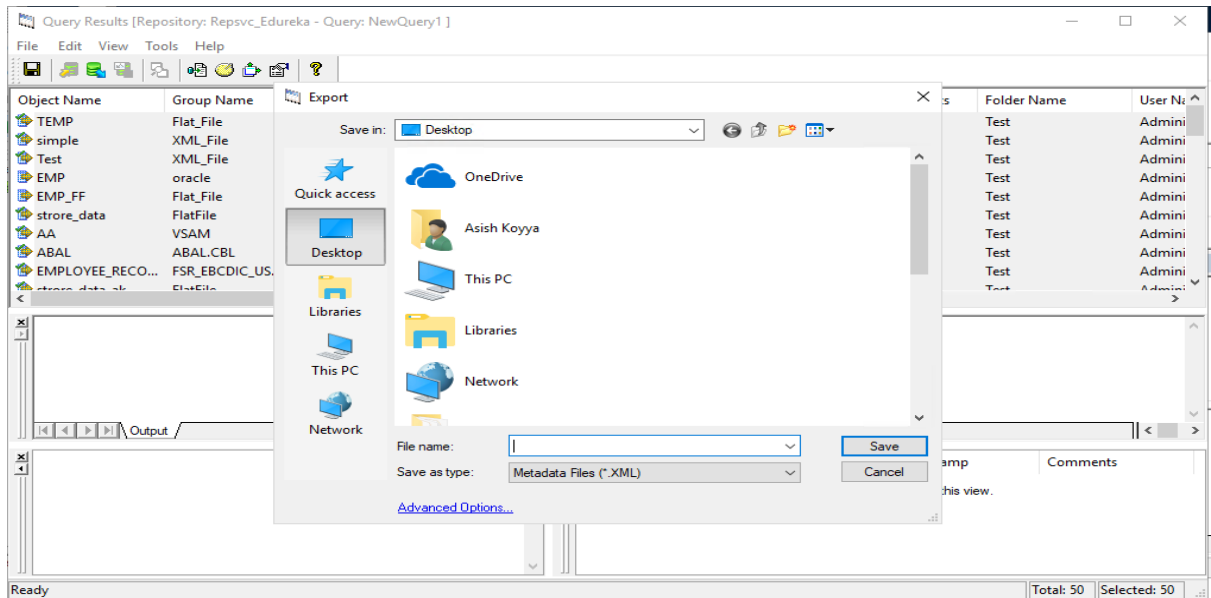
- In the Query Editor, select “Parameter Name” as “Folder” (from drop down), “Operator” as “Is One Of” & in “Value1”, select all Folders one after the other and then click OK.



- In the “Query Result” window, select all objects and Right click **Export to XML File**.



- Browse where the file needs to be placed and the name it as required. Click **Save** to export all the objects of the repository into a single XML file.



3. Informatica Workflow Extraction – Individually (Alternative)

Alternatively, if the procedure given in [Topic-2](#) does not work at your end, follow the below steps to export all objects from your Informatica repository.

- Download this utility “InfaWFExport.py” along with the Properties file.



WFExport.zip

- Next, before executing the utility, configure the following properties in the downloaded Properties file namely “WFExp_properties.py”.
 - OS – Your operating system which can be either Windows or Linux
 - WinDirectory – This variable should be updated only if your machine is running on Windows OS. Path for Informatica utilities e.g.
"C:\Informatica\9.6.1\clients\PowerCenterClient\client\bin"
 - UnixDirectory – This variable should be updated only if your machine is **not** running on Windows OS. Path for Informatica utilities e.g.
"/infa/shared/Informatica/9.6.1/Server/bin"
 - DomainName – Domain name of your Informatica server
 - RepositoryName – Repository name of your Informatica server
 - LoginUser – User ID with which you can login into the Informatica server
 - LoginPassword – Password for the above-mentioned user ID

- ExportFolder – Path where the files need to be exported
 - For Windows – “C:\\Export”
 - For Linux\\Unix – “/home/infa/export”