

Cognos Report Extraction Prerequisites

Contents

- 1. Introduction3
- 2. Cognos Report Extraction (Bulk Export) – Preferred.....3
 - 2.1 Export via Cognos Portal.....3
 - 2.2 Export using SQL Query3
- 3. Cognos Report Extraction4
- 4. Data Model Extraction Using Cognos Framework Manager9
- 5. Cubes Extraction Using Cognos Transformer10
- 6. Getting Help.....11

1. Introduction

LeapLogic's Assessment profiles existing inventory, identifies complexity, auto-generates an end-to-end dependency structure, and provides comprehensive recommendations for migration to modern data platform.

2. Cognos Report Extraction (Bulk Export) – Preferred

LeapLogic requires Cognos report in the XML format to perform an assessment. Follow the below given steps to bulk export all the Cognos reports in one go. **You can follow either the export method given 2.1 or 2.2.** Both will yield the same results. Please choose as per your convenience.

2.1 Export via Cognos Portal

1. Login to the Cognos portal.
2. Navigate to IBM Cognos Administration.
3. Next, go to **Configuration > Content Administration**.
4. Select **New Export** from the right top frame of the window.
5. Select all/required Folders which you want to export.
6. A deployment package (a .zip file) gets downloaded on your local system.
7. Share the package with the Impetus team for assessment.

2.2 Export using SQL Query

To use this method, you should have access to Cognos Metadata Database. Use the below given SQL query for the content store database to export all or selected Cognos report XMLs.

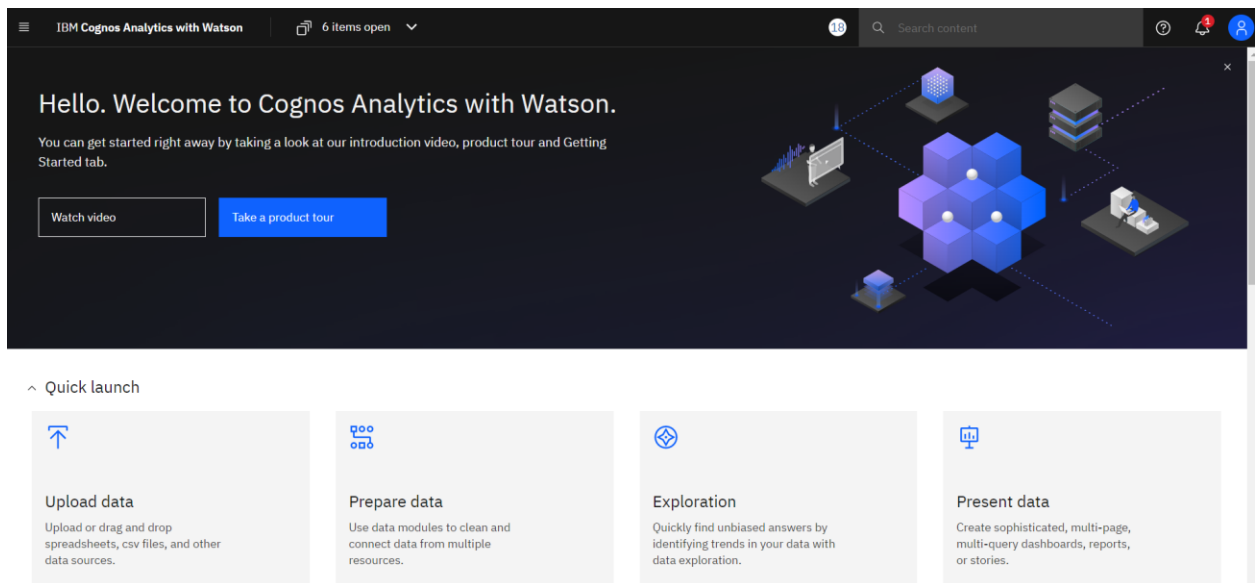
```
SELECT  CMOBJNAMES_BASE.NAME AS ObjName, CMOBJECTS.PCMID, CMCLASSES.NAME AS
ClassName, CMOBJPROPS7.spec
FROM    CMOBJECTS
JOIN    CMOBJNAMES_BASE ON CMOBJECTS.CMID  = CMOBJNAMES_BASE.CMID
JOIN    CMCLASSES      ON CMOBJECTS.CLASSID = CMCLASSES.CLASSID
LEFT JOIN CMOBJPROPS7   ON CMOBJECTS.CMID = CMOBJPROPS7.CMID
WHERE   CMOBJECTS.CLASSID IN (10, 37)
        --and upper(SPEC) like '%[SALES DETAIL]%'
ORDER BY CMOBJECTS.PCMID
```

Share the exported reports with the Impetus team for assessment.

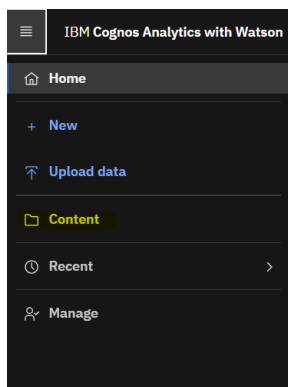
3. Cognos Report Extraction

LeapLogic requires Cognos report in the XML format to perform an assessment. Follow the below given steps to achieve the same.

1. Open Cognos Analytics server in a browser.



2. Open the navigation menu from the top left top corner of the page and click **Content**.



3. Click **Team content > Samples**.

Note: This is just an example. Select the folder which contains your report.

Content

My content **Team content** Samples

Name	Type	Last Accessed
Calendars	Folder	9/17/2022, 10:41 AM
Get started	Folder	9/17/2022, 10:41 AM
Samples	Folder	9/17/2022, 10:41 AM
Templates	Folder	9/17/2022, 10:41 AM
The Weather Company, an IBM Business	Folder	9/17/2022, 10:41 AM

4. Click **Reports**.

Samples

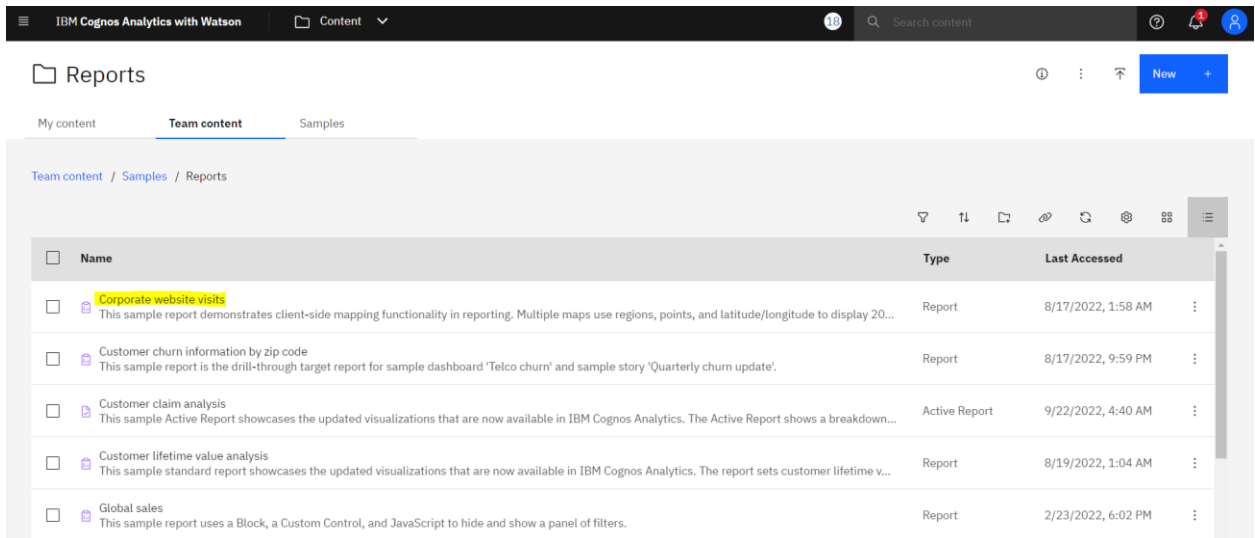
My content **Team content** Samples

Team content / **Samples**

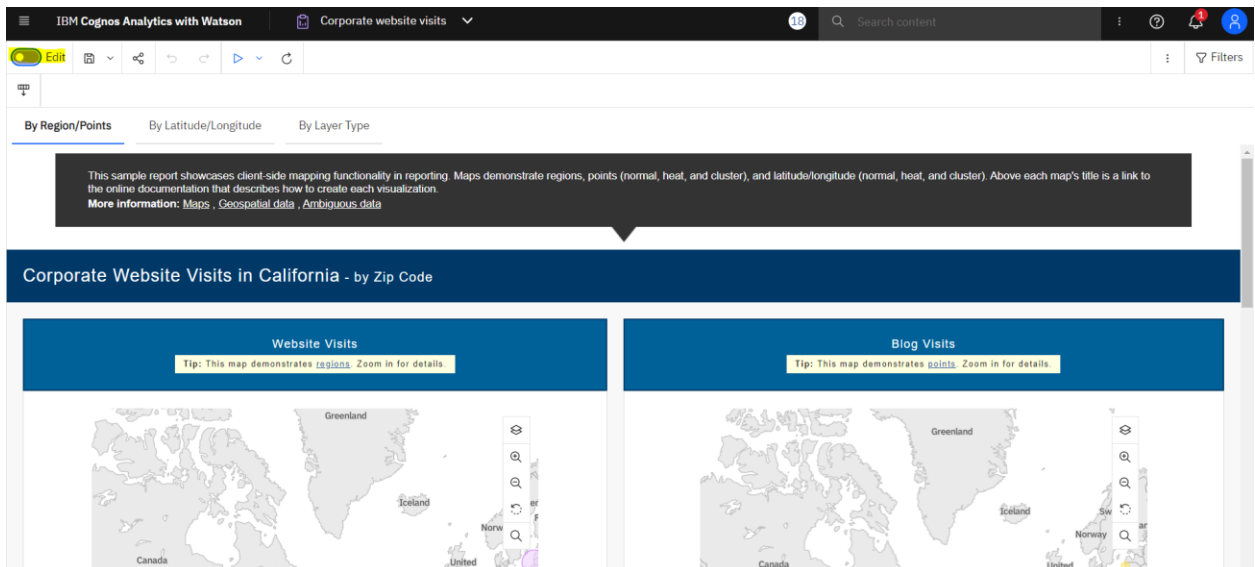
Name	Type	Last Accessed
Extensions	Folder	9/7/2022, 1:33 PM
Relative dates	Folder	9/7/2022, 1:33 PM
Reports	Folder	9/7/2022, 1:33 PM
Stories	Folder	9/7/2022, 1:33 PM

5. Now, select the report which you want to export.

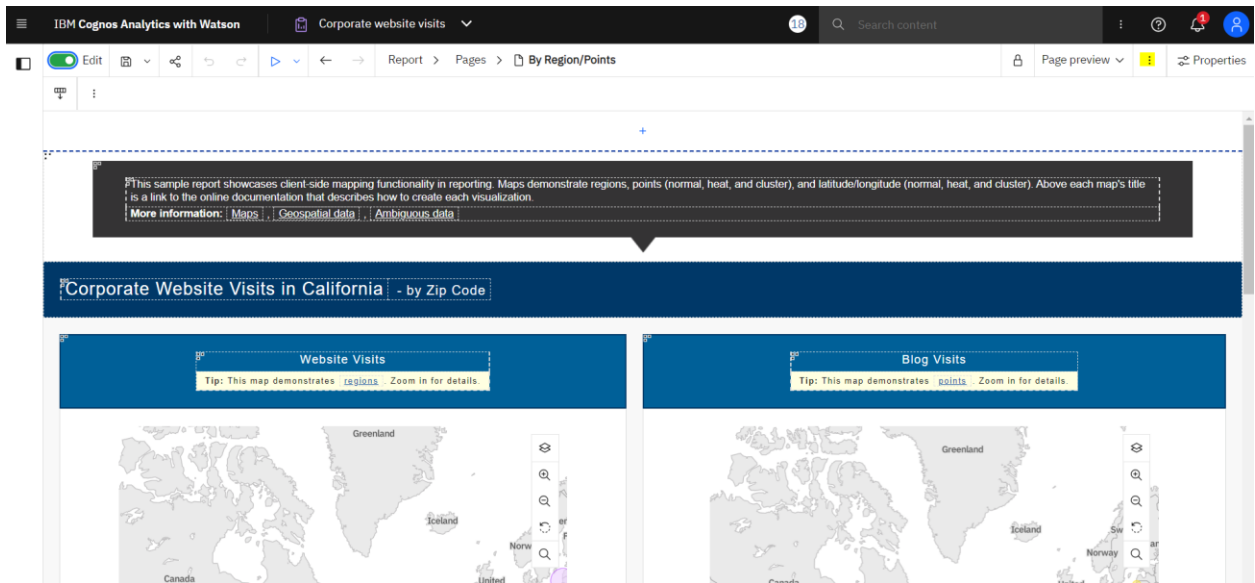
For example, I have chosen the first one which is **Corporate website visits**.



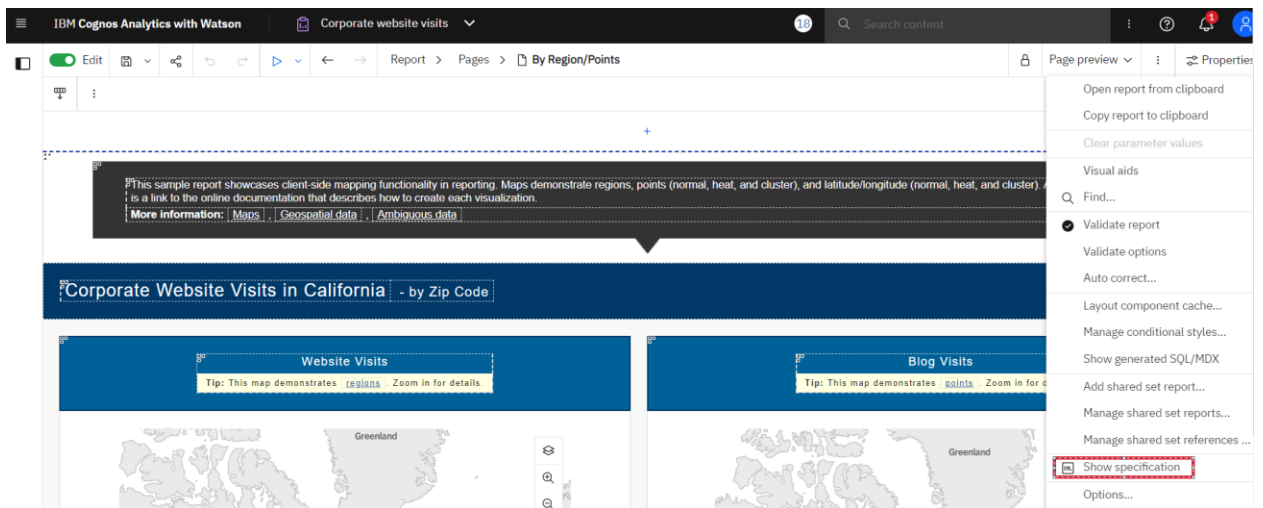
6. Once you click on the report, it opens and looks something like as given below. Next, select **Edit** from the top left corner of the page. It will turn from Grey to Green.



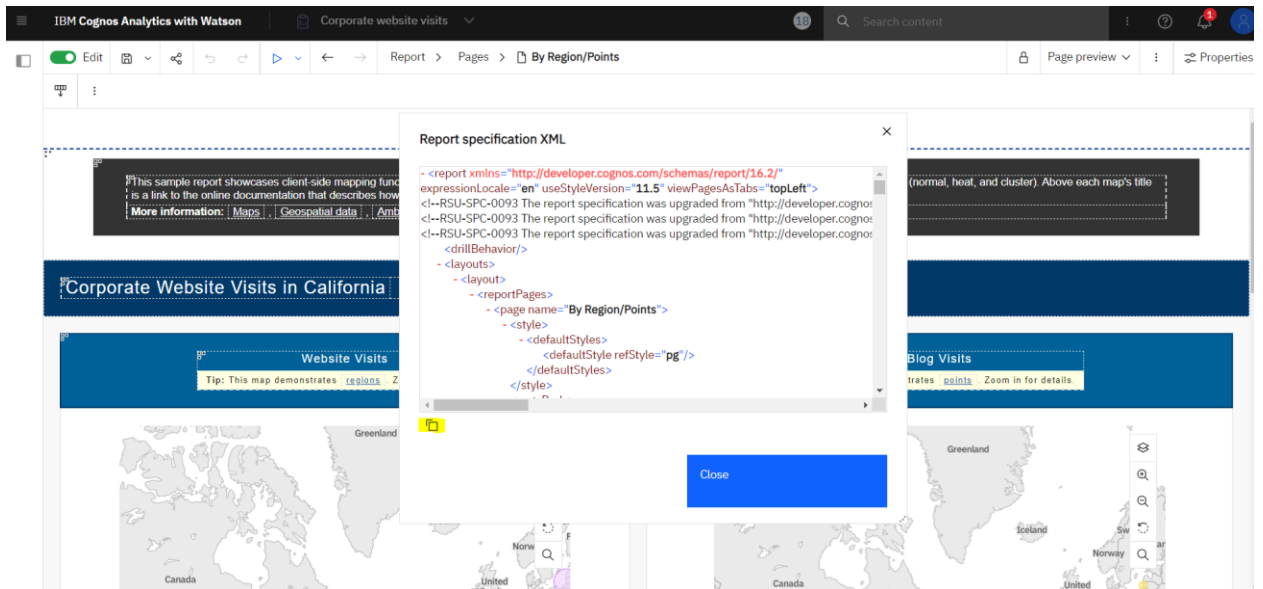
7. Next, click the context menu (three dots) from the top right corner of the page as highlighted in the below screenshot.



8. Click **Show specification** from the same menu.



9. Click **Copy icon** as shown in the below screenshot and paste it in a Notepad. Save it with the report name + XML in a .xml format.

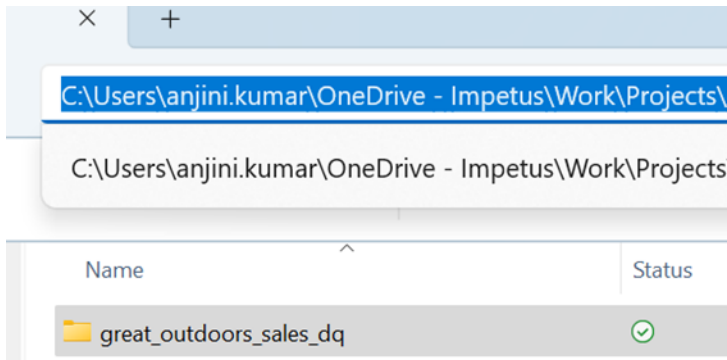


10. Place the file in a file archiver.

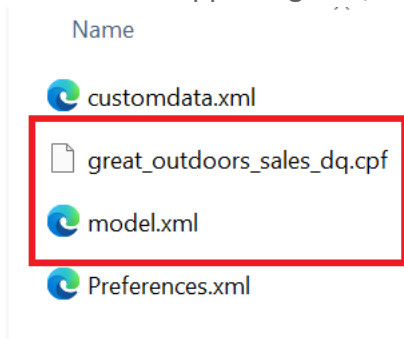
4. Data Model Extraction Using Cognos Framework Manager

LeapLogic requires data models in the XML format to perform an assessment. Follow the below given steps to achieve the same.

1. Go to the Windows server or system where the Cognos Framework Manager is installed.
2. Go to the folder where the model is saved.
3. For example, great_outdoors_sales_dq is the model folder where all files related to the Framework model are stored.



4. Confirm that `model.xml` and `<project-name>.cpf` files are present in the folder. There may be some other supporting files, but these files are important from the assessment point of view.



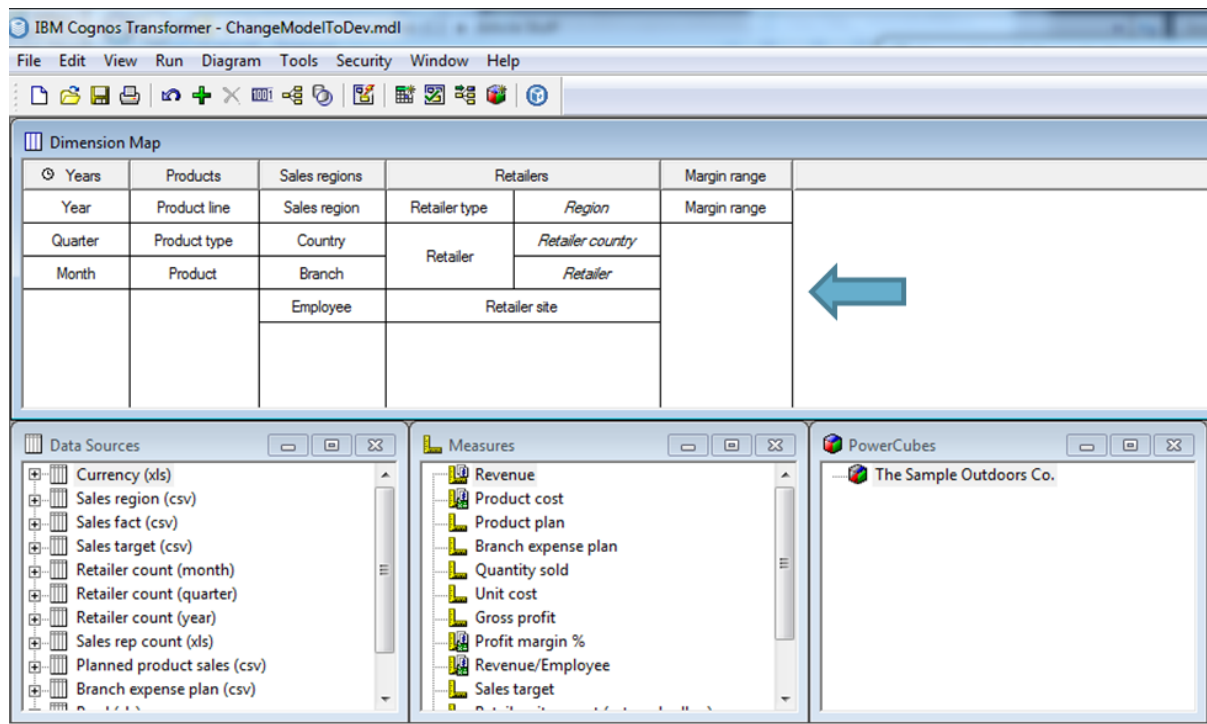
5. Archive the folder “great_outdoors_sales_dq”.

Note: This is just an example. Select the folder which contains your Framework model.

5. Cubes Extraction Using Cognos Transformer

LeapLogic requires cubes in the MDL (Model Definition Language) format to perform an end-to-end assessment. Follow the below given steps to achieve the same.

1. Launch IBM Cognos Transformer



2. Go to File > Open
3. Browse and select the .mdl file to download

6. Getting Help

Contact LeapLogic technical support at info@leaplogic.io